



# Berge rugged 15" panel PC

Slim design combined with powerful  
3rd Generation Intel® Core™ i5



The 15" BERGE rugged panel computer is a professional system for the maritime industry. It features industrial grade bonded LCD screen for the best possible viewing angles. Fanless conductive cooling and a solid state hard drive makes the system virtually silent. The system is also vibration proof and shock proof. This makes 15 Inch Maritime rugged panel computer a good choice for tough environments.

### TFT Technology

- High quality active matrix TFT with LED Backlight
- 15 inch viewable image size , Aspect ratio 4:3

### TFT Characteristics

- Display mode: TN
- Native resolution: 1024 X 768
- Optical bonded:Yes
- Pixel pitch (RGB): 0.297 mm
- Response time standard: >= 10 ms
- Contrast ratio standard: 3000:1
- Light intensity: 400 NITS
- Dimmer control: 0-100%
- LED back light: Yes
- Viewable angle: >= 80° horizontal and vertical
- Max colors: 16.7 million

### Computer Specifications

- OS: Windows XP, Windows 7, Linux
- Storage: SSD 16-120 GB
- CPU: Core i5-7 3rd generation
- Memory: 2-4 GB DDR3 1333Mhz support
- System chipset: Intel® HM76
- Graphics chipset : HD 4000
- Ethernet LAN #1 : 10 / 100 / 1000
- Audio chipset : IDT 92 HD 81
- BIOS : AMI APTIO
- Power manager: ACPI 3.0

### Power Specifications:

- Multi-power supply: 9-36 V DC
- Power consumption: >50W

### Physical considerations:

- General dimensions: H292 mm X W367 mm X D45 mm
- Weight: 3.7 kg / 8.2 lbs

### User Controls:

- Power: On / Off
- Backlight Up /Down: 0-100% dimming

### Environmental considerations:

- Operating Temperature:(-)15 to (+)55 degrees Celsius
- IP rating: 69 K

### Safety considerations:

Even though test conditions for bridge units provide for a maximum operating temperature of 55°C, continuous operation of all electronic equipment should take place at an ambient temperature of only 25 °C. This is a necessary precaution to assure a long life and low service costs.

### Input / Output connectors:

- Ethernet Gbit RJ45: 1 Port
- USB 2.0: 3 Ports
- USB 3.0: 1 Port
- Sound output jack: Yes

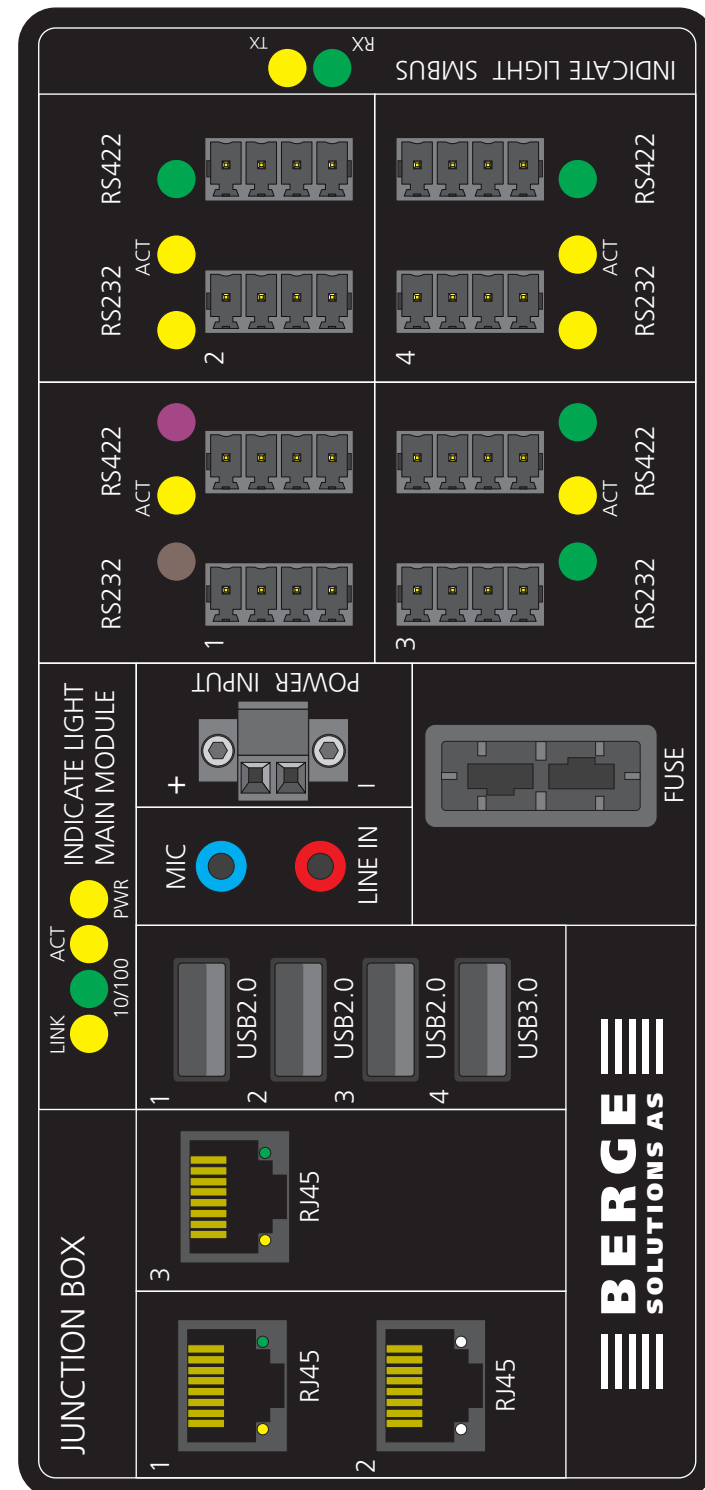
### Available accessories:

- Key pad with joystick
- Junction box

### Options:

- Waterproofing IP69K
- Optical Bonding
- High Brightness Display

Specifications are subject to change without prior notice.



Fjordgaten 13b  
3125 Tønsberg  
Norway  
www.bergesolutions.com